

TURNER



Group

Turner & Co (Glasgow) Limited

- Group Overview

The logo for the Turner Group, featuring the word "TURNER" in a bold, white, sans-serif font on a dark green rectangular background.

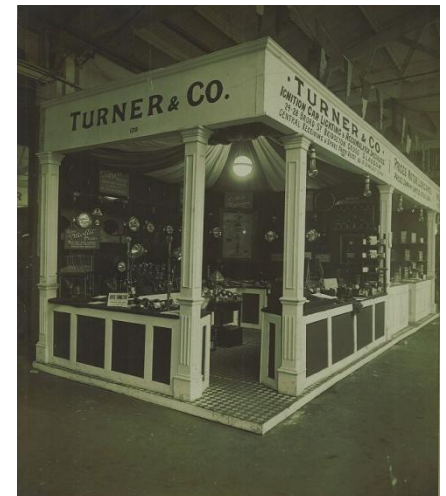
TURNER

A close-up photograph of industrial machinery, showing a metal component with a yellow circular part and various mechanical details.

Group

A privately controlled group of autonomous companies, the Turner Group is engaged in the supply and servicing of equipment, as well as the provision of comprehensive support services, across a wide range of industries:

- Founded in 1912
- Turnover in excess of £240m
- Employing over 2,100 employees, worldwide
- Visit www.turner.co.uk for further detail
- Head Office – Glasgow, Scotland
- Group Chairman – Gordon Turner

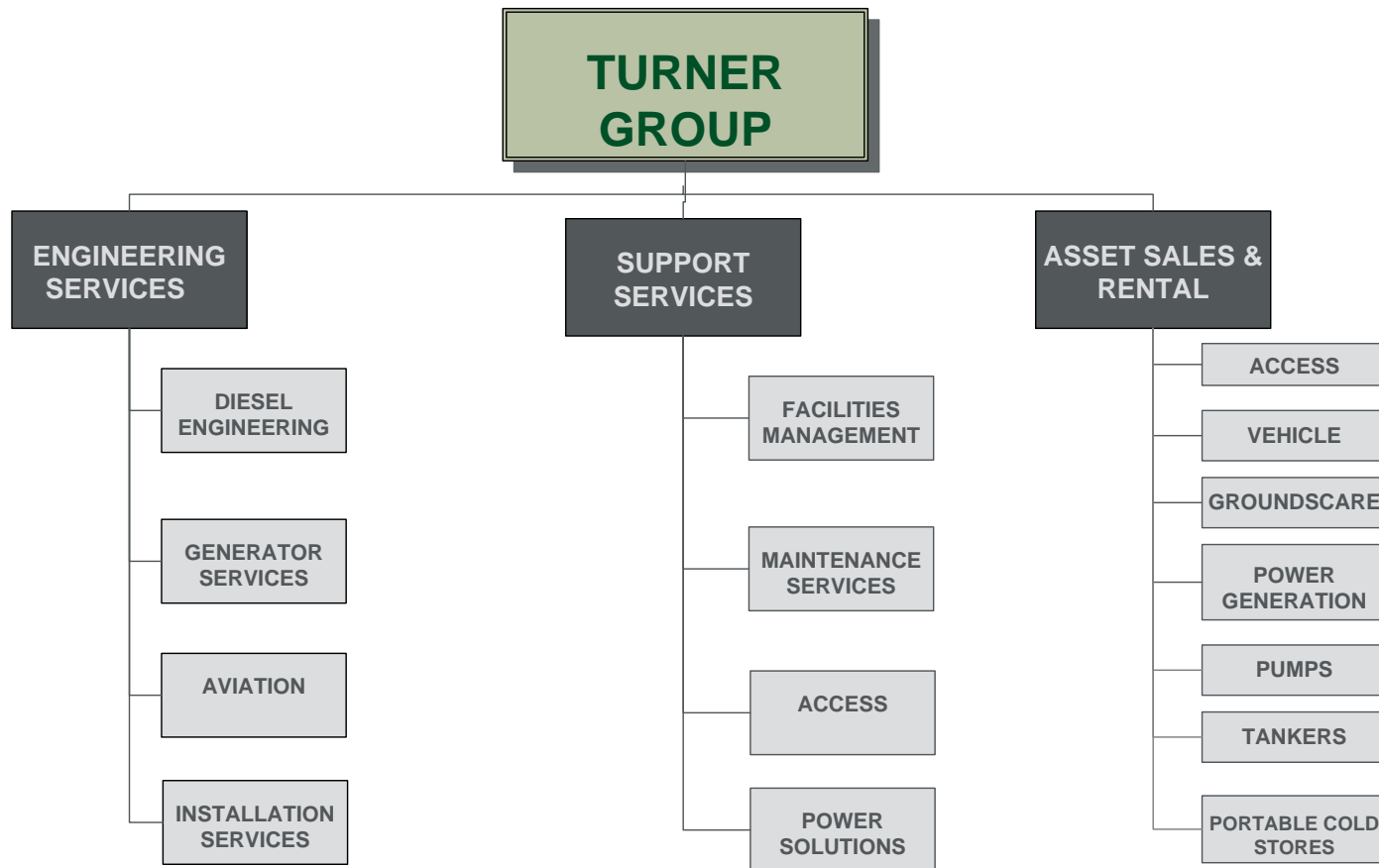


Archive Image

TURNER

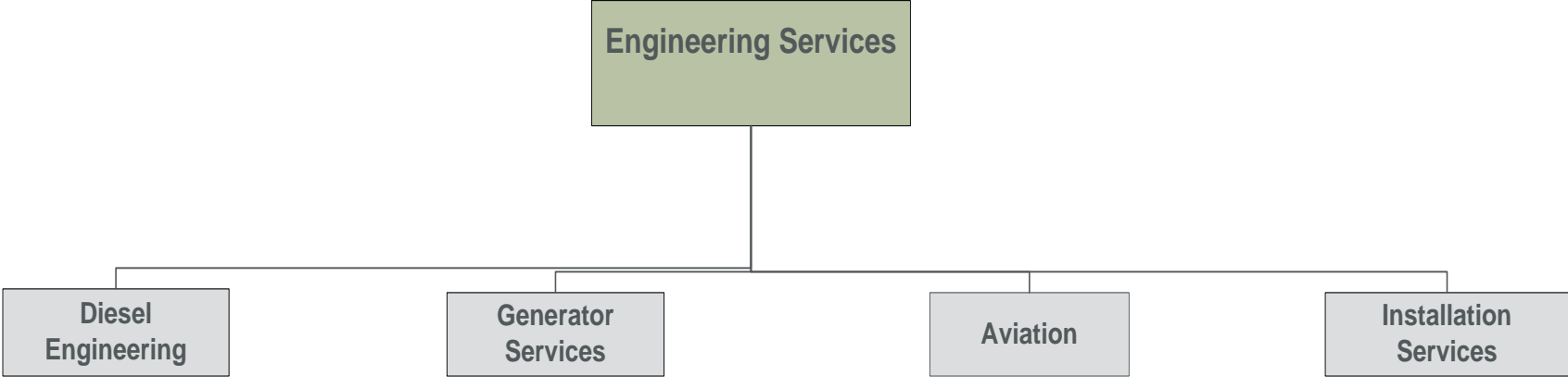
Group

Turner Group offer a wide range of services





Turner Group Companies:



- Turner Engine Powered Services*
- Turner Engine Controls
- Turner Engine Powered Solutions**
- Mitchell Diesel
- Central Diesel
- Turner Explosion Protection Systems***

- Turner Engine Powered Services*
- Turner Engine Powered Solutions**
- Power Electrics
- Powerplant Stamford

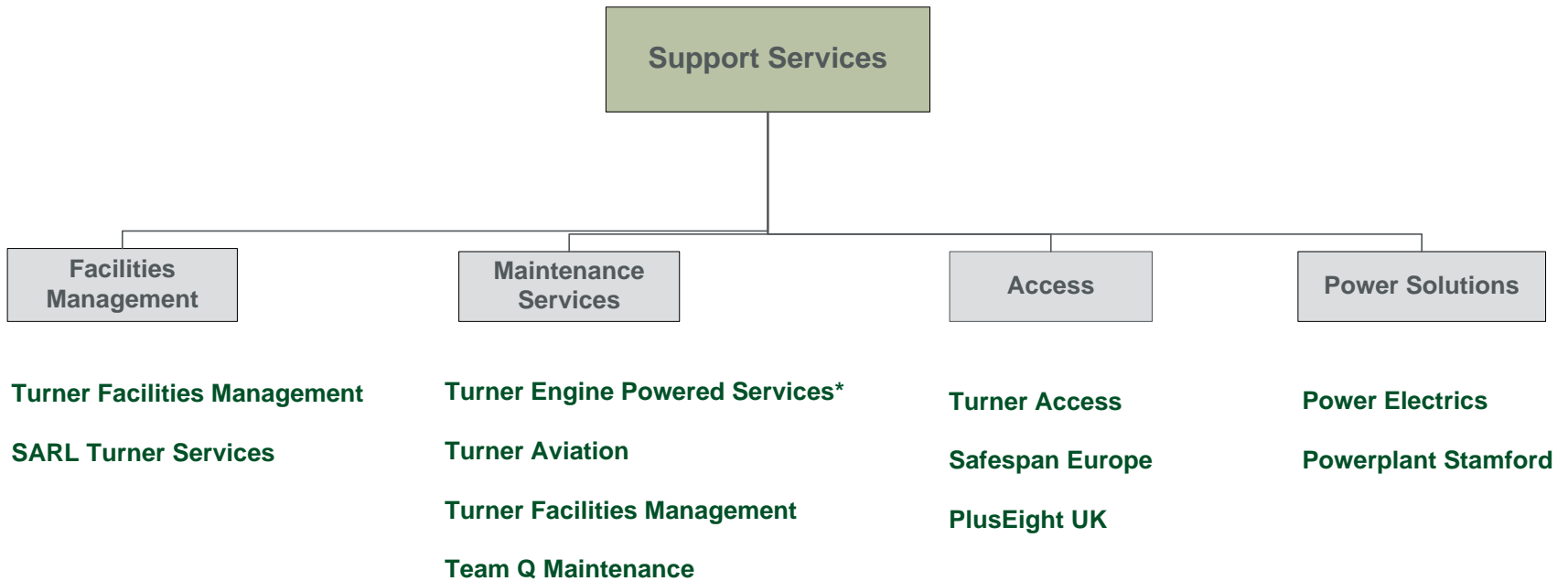
Turner Aviation

Team Q

*Turner Engine Powered Services formerly known as Turner Diesel
 **Turner Engine Powered Solutions formerly known as Tilsley & Lovatt
 ***Turner Explosion Protection Systems formerly known as FlameTec



Turner Group Companies:



*Turner Engine Powered Services formerly known as Turner Diesel



TURNER



Group

Turner Group Companies:

